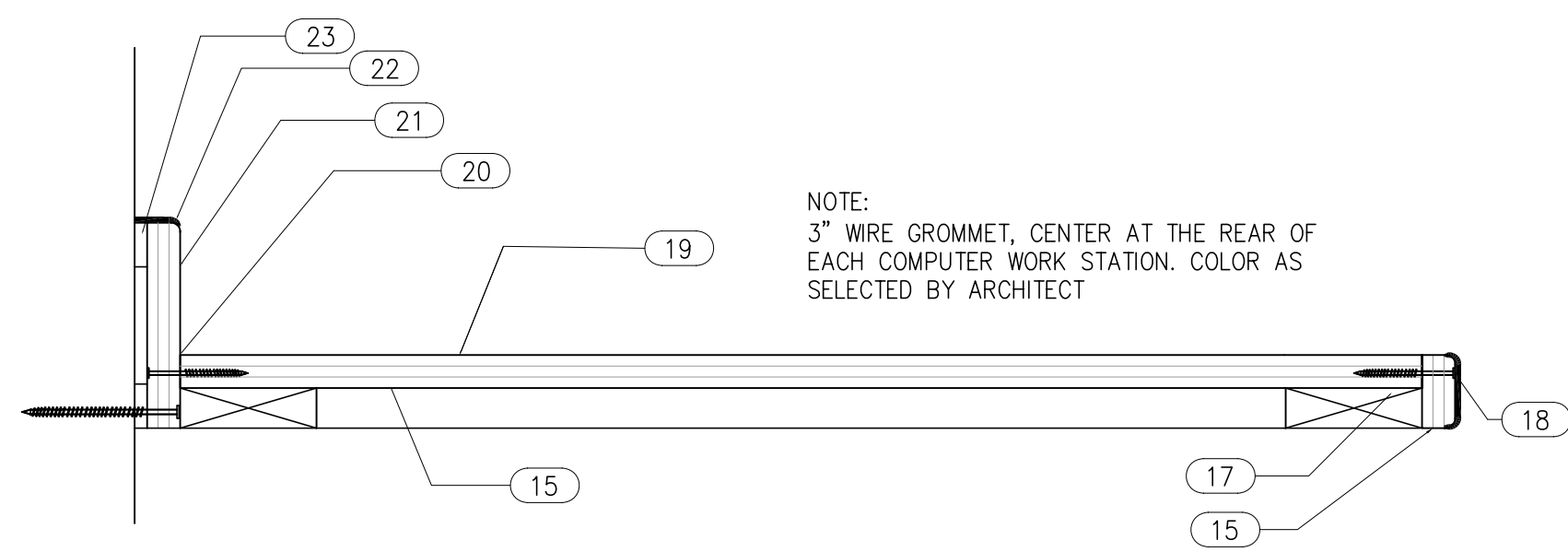
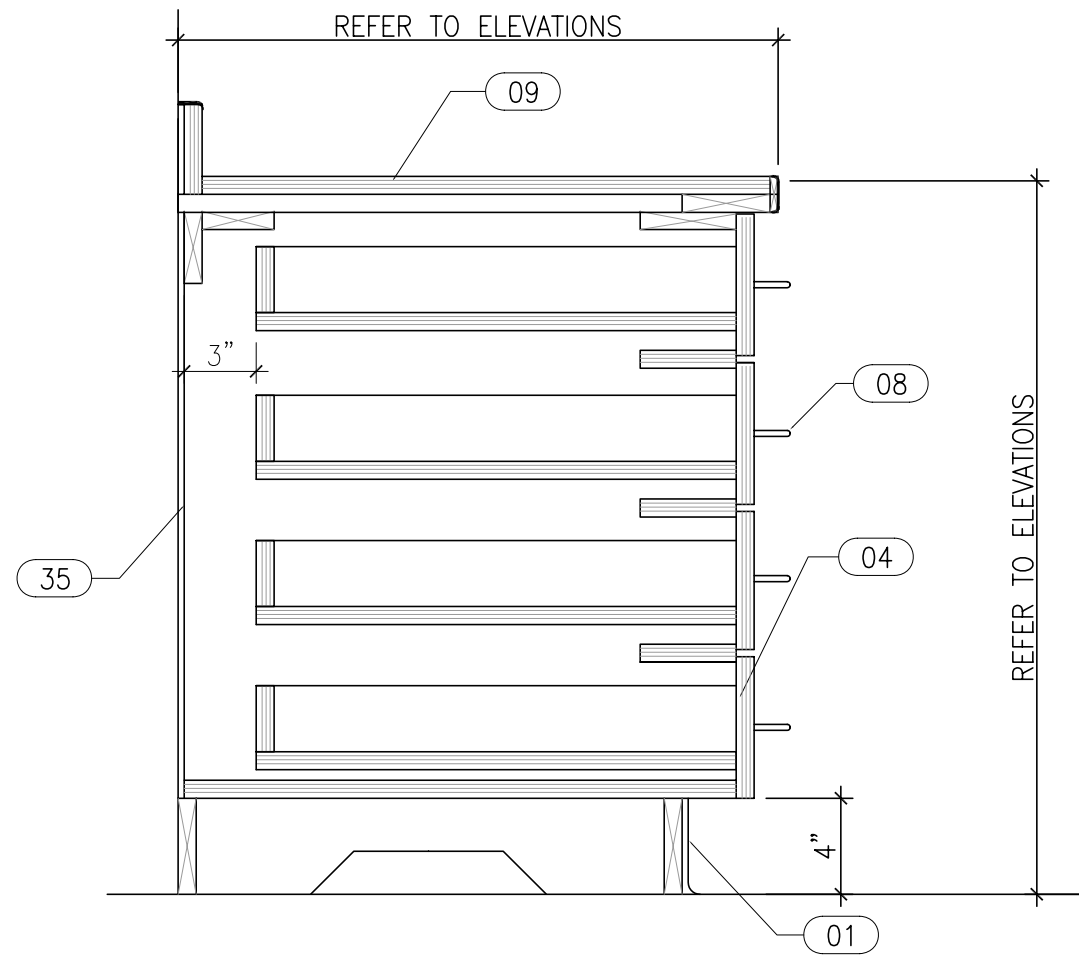


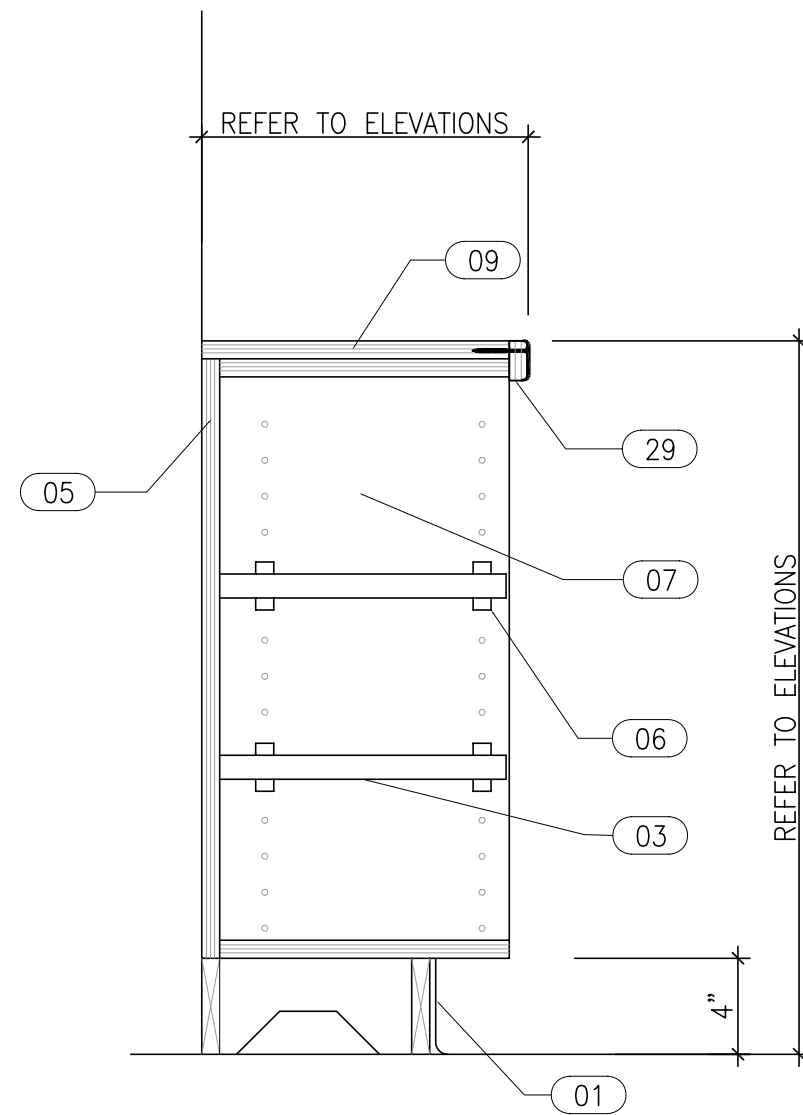
**F** CABINET SECTION  
SCALE: 1 1/2"=1'-0"



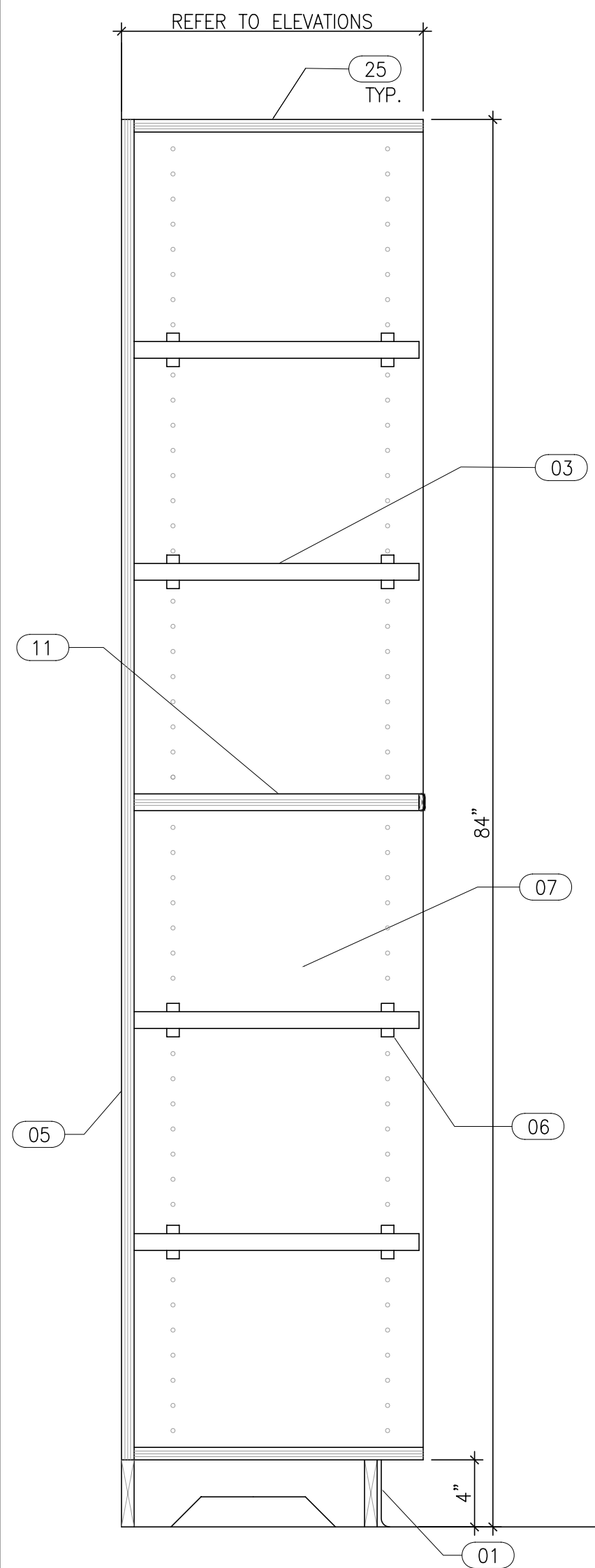
**G** PLASTIC LAMINATE  
COUNTER TOP SECTION



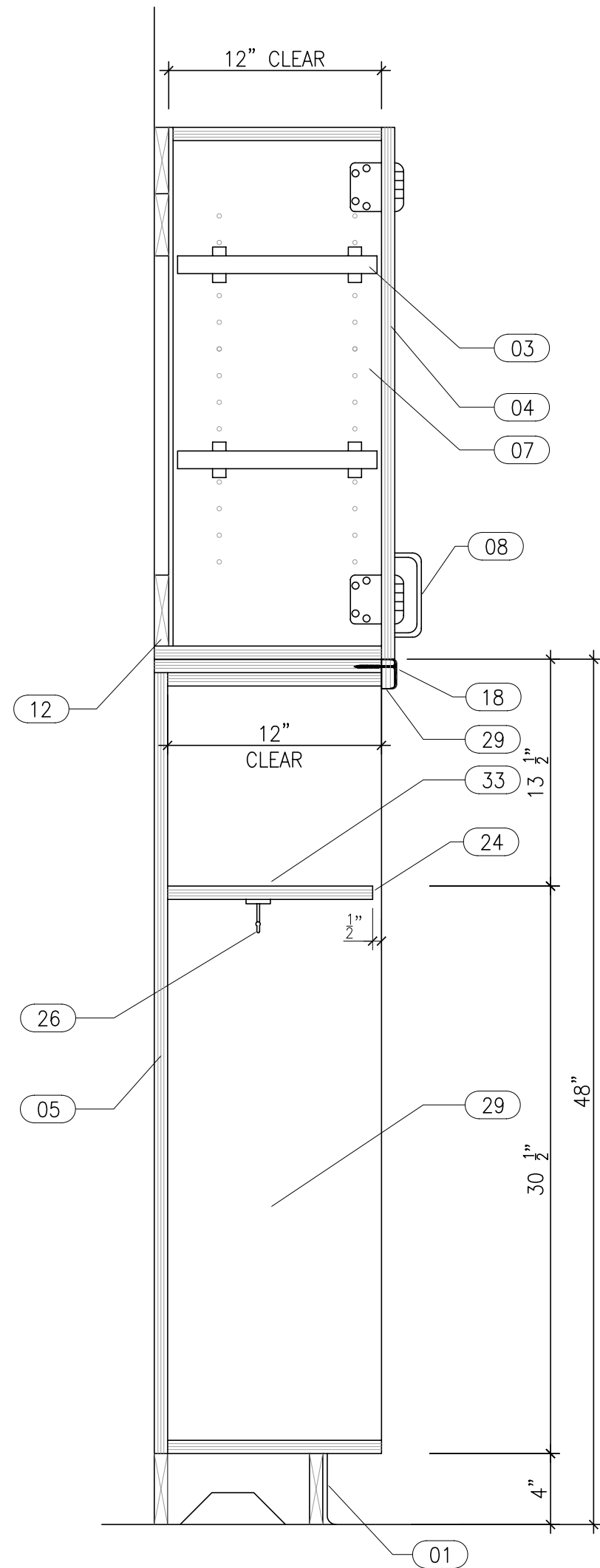
**H** DRAWER SECTION  
SCALE: 1 1/2"=1'-0"



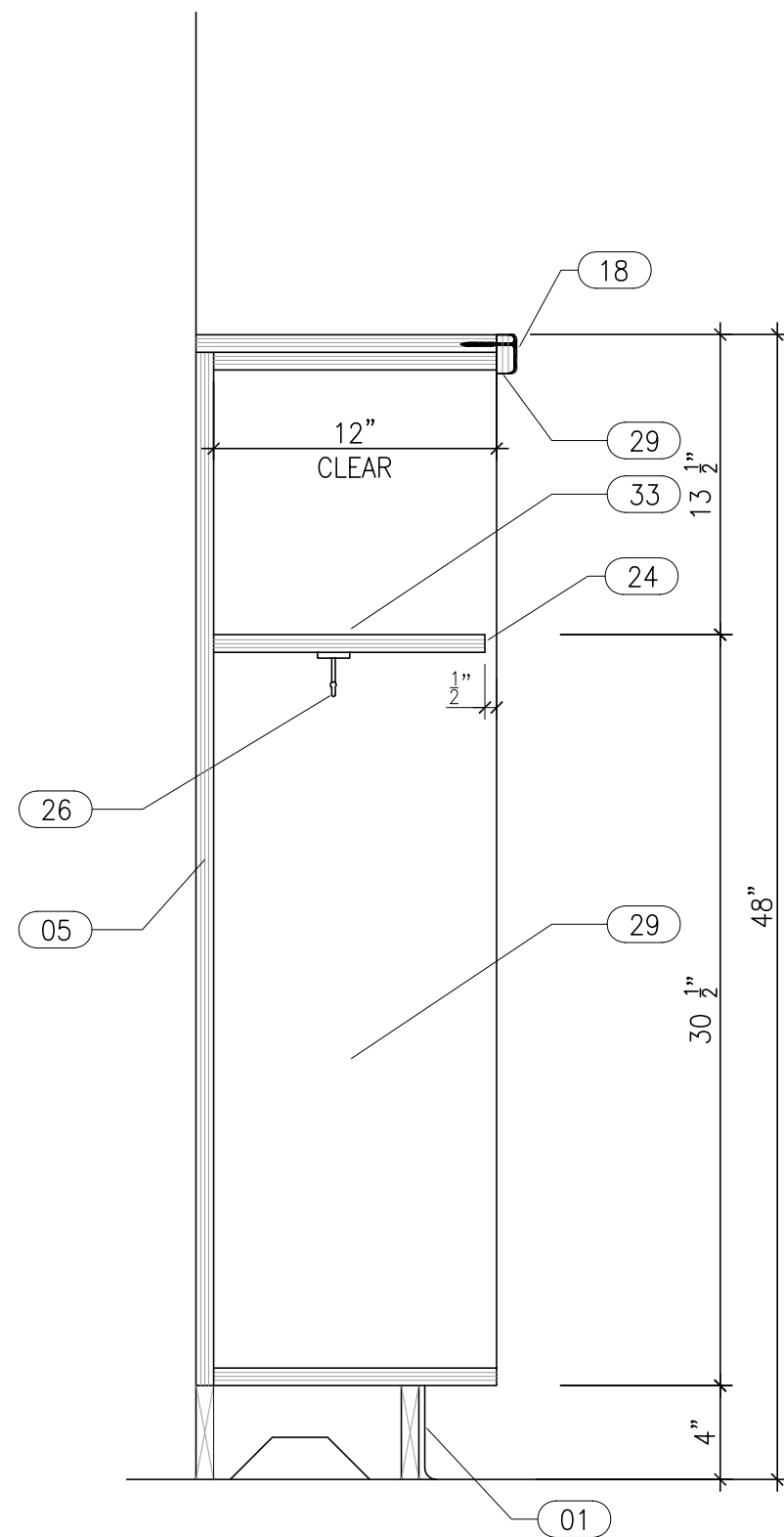
**J** CABINET SECTION  
SCALE: 1 1/2"=1'-0"



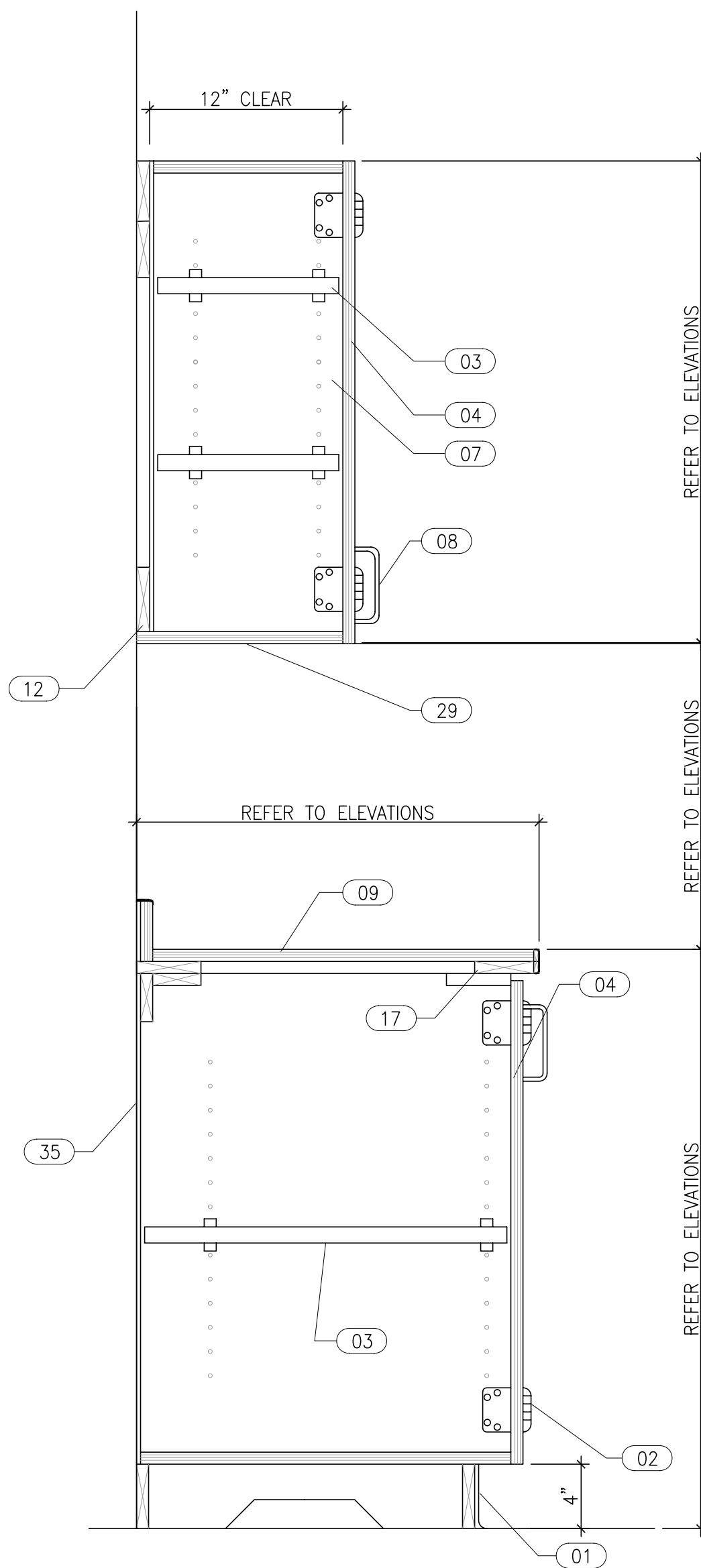
**A** CABINET SECTION  
SCALE: 1 1/2"=1'-0"



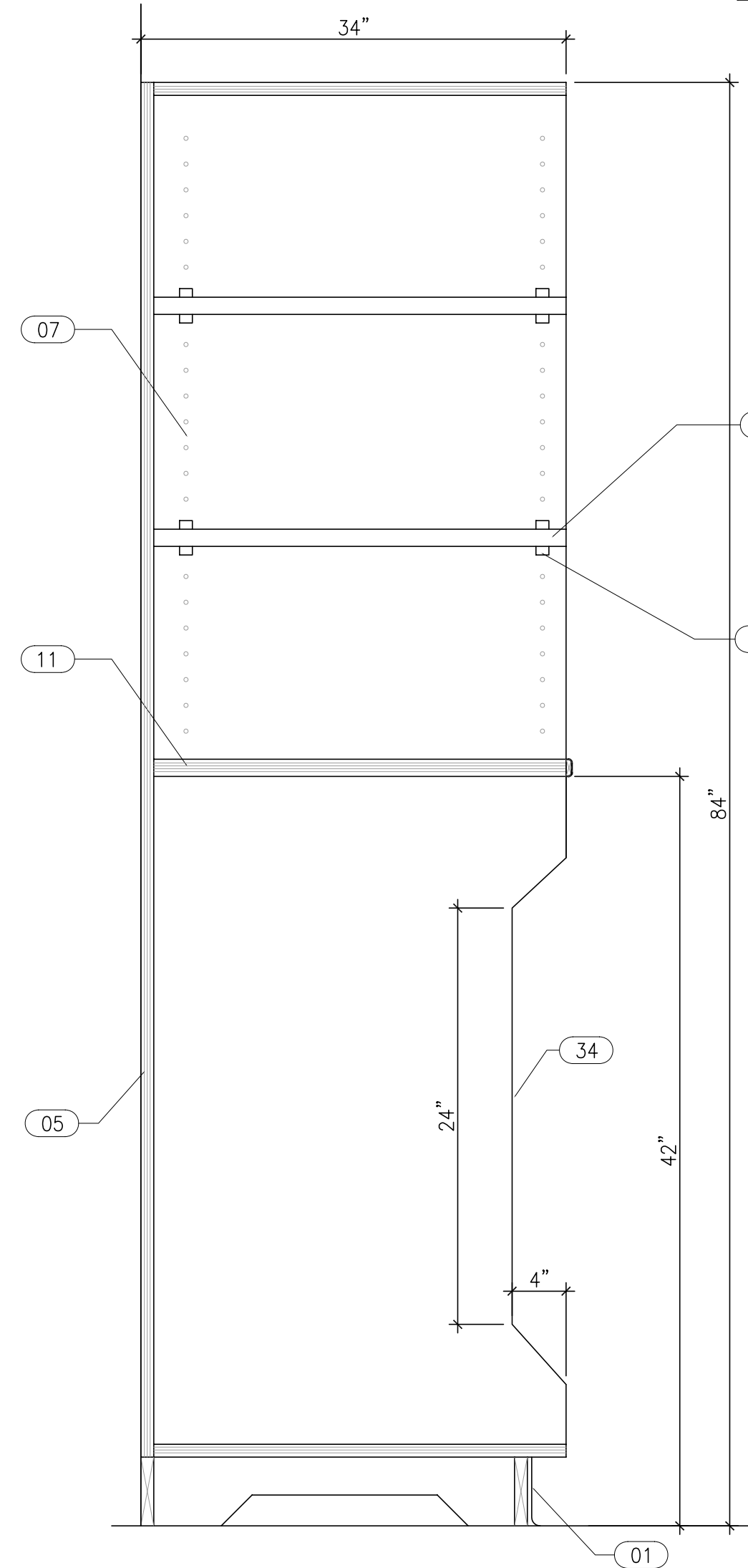
**B1** CABINET SECTION  
SCALE: 1 1/2"=1'-0"



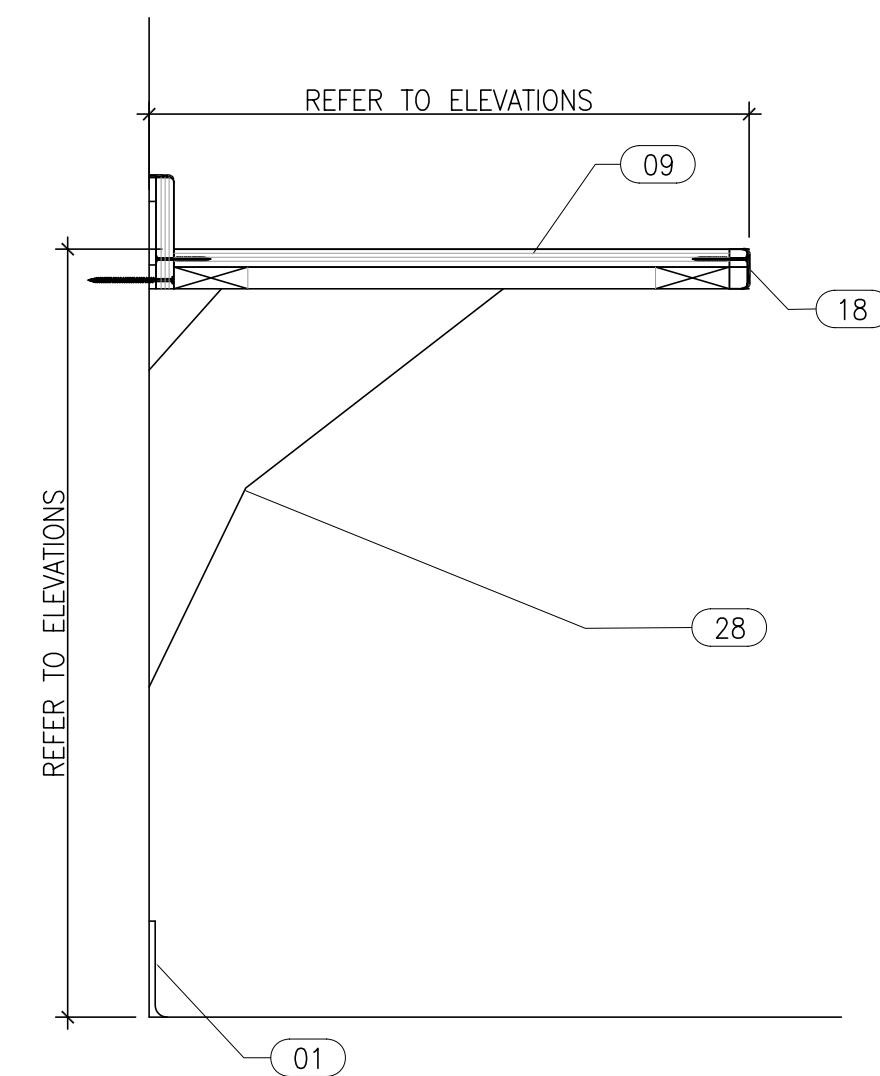
**B2** CABINET SECTION  
SCALE: 1 1/2"=1'-0"



**C** CABINET SECTION  
SCALE: 1 1/2"=1'-0"



**D** CABINET SECTION  
SCALE: 1 1/2"=1'-0"



**E** CABINET SECTION  
SCALE: 1 1/2"=1'-0"

## SHEET NOTES:

- SYMBOL DESCRIPTION: (THESE NOTES SPECIFIC TO THIS DRAWING)
- 01 RUBBER BASE. SEE FINISH SCHEDULE
  - 02 HINGE - REFER TO SPECS
  - 03 1" ADJUSTABLE SHELF ON A PRE-DRILLED 32mm ADJUSTABLE SHELVING SYSTEM. EDGE BAND ALL FOUR SIDES
  - 04 3/4" MDF DOOR OR DRAWER FRONT COMPLETELY ENVELOPED IN PLAS LAM WITH A 3MM PVC EDGE BAND
  - 05 3/4" PLASTIC LAMINATE CLAD BACK PLYWOOD WITH BACKER SHEET
  - 06 HEAVY DUTY, DOUBLE PIN LOCKING, SHELF CLIP.
  - 07 3/4" PLASTIC LAM. CABINET BOX WITH A COLORED EDGE BAND
  - 08 SOLID BRASS "C" PULL W/ A SATIN CHROME FINISH - 4" CENTERS
  - 09 REFER TO DETAIL G/A5.4 AND RESPECTIVE ELEVATION
  - 10 NOT USED
  - 11 FIXED CENTER SHELF ONLY- ALL OTHERS SHELVES ARE ADJUSTABLE
  - 12 P.T. AGAINST CMU
  - 13 NOT USED
  - 14 SHELF CLIP
  - 15 3/4" PLYWOOD W/ BACKER SHEET
  - 16 NOT USED
  - 17 GLUE AND ATTACH TOP WITH SCREWS
  - 18 3MM PVC EDGE WITH A 1/8" ROUND OVER EASE EXPOSED CORNERS WITH A 1 1/2" RADIUS
  - 19 PLASTIC LAMINATE CLAD 3/4" PLYWOOD TOP
  - 20 CAULK JOINT PRIOR TO ATTACHMENT WITH 2" SCREWS
  - 21 PLASTIC LAMINATE CLAD 3/4" PLYWOOD BACKSPLASH 3" HIGH
  - 22 3MM PVC EDGE WITH A 1/8" ROUND OVER
  - 23 SCRIBE AND CAULK
  - 24 PVC EDGE BANDING ALL EXPOSED EDGES, TYP.
  - 25 CABINET LINER TYPICAL AT TOP OF ALL CLOSET ROOM SHELVING UNITS
  - 26 DOUBLE COAT HOOK
  - 27 NOT USED
  - 28 COUNTER BRACKET. SEE SPECIFICATIONS
  - 29 PLASTIC LAMINATE ALL VISIBLE SURFACES
  - 30 1" ADJUSTABLE SHELF ON A PRE-DRILLED 32mm ADJUSTABLE SHELF CLIPS EDGE BAND ALL FOUR SIDES. 3" CASEWORK GROMMETS EACH SHELF
  - 31 FIXED COUNTERTOP
  - 32 2 EACH 3" CASEWORK GROMMET
  - 33 FIXED SHELF
  - 34 PLASTIC LAMINATE DIVIDERS WITH COLORED PVC BANDING
  - 35 1/2" PLYWOOD BACK W/ BACKER SHEET & PLASTIC LAMINATE LINER

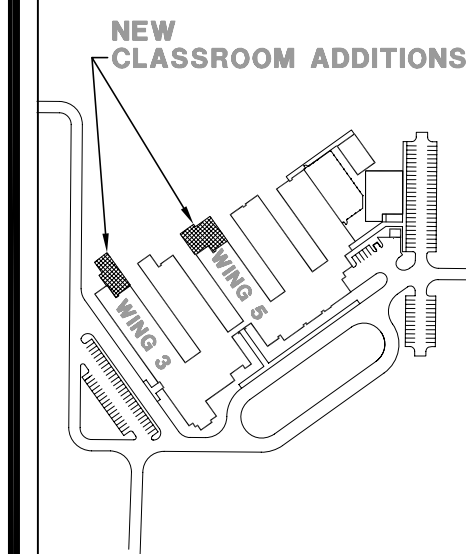


PINDER-MARTIN  
ASSOCIATES, INC.  
1001 N. 12th AVENUE  
PENSACOLA, FL 32501  
850-439-9110

AA26000896

PROJECT:  
5 CLASSROOM ADDITION  
LOCATION:  
WEST NAVARRE INTERMEDIATE  
SCHOOL  
1970 COTTON BAY LANE  
NAVARRE, FL 32566

CONSULTANTS:  
JEHLE-HALSTEAD, INC.  
49 EAST CHASE STREET  
PENSACOLA, FL 32502  
CRAFT & WEBSTER  
STRUCTURAL ENGINEERING, INC.  
129 HIGHPOINT DRIVE  
GULF BREEZE, FL 32561  
GULF BREEZE CONSULTING, INC.  
139 EAST GOVERNMENT STREET  
PENSACOLA, FL 32502  
ADAMS CONSULTING  
ENGINEERING, INC.  
3 WEST GARDEN STREET - SUITE 382  
PENSACOLA, FL 32502



WEST NAVARRE  
INTERMEDIATE

No.	Revision/Issue	Date

DAVID J. PINDER  
ARCHITECT OF RECORD  
AR 0010532

DRAWN BY: djp/dcp  
CHECKED BY:   
PINDER-MARTIN ASSOCIATES, INC.  
PROJECT #: 21118.03  
REVIEW: 09-06-11  
PERMITTING: 09-09-11  
RELEASE FOR BIDDING: 09-19-11

CABINET  
SECTIONS

A5.5  
21118.04 A5\_5